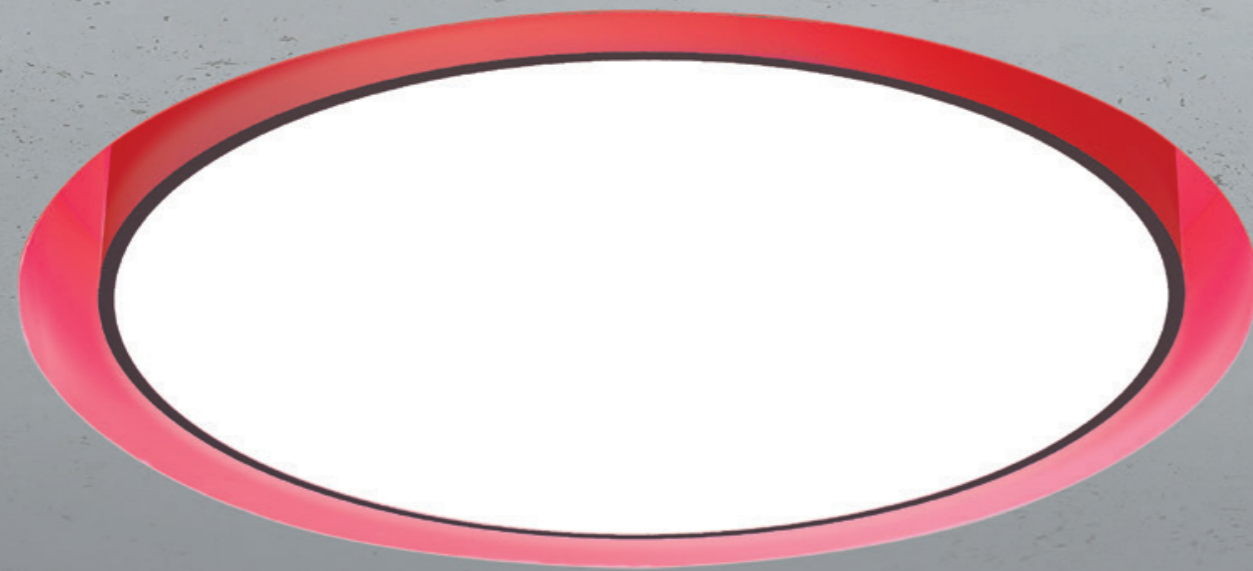


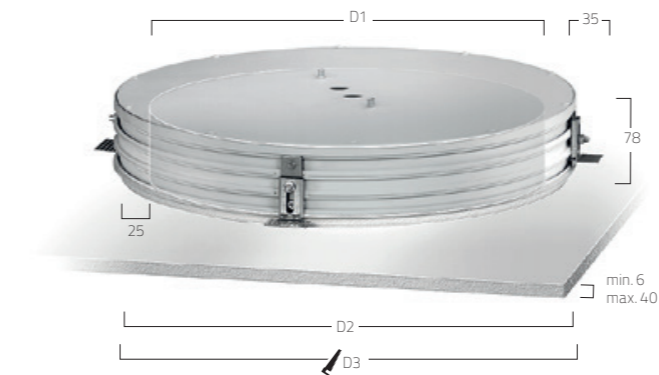
BASIC MAX RECESSED AURA | N1



DE LED-Einbauleuchte für rahmenlose Montage in Gipskartondecken. Direktstrahlend mit indirekter Lichtkorona. Leuchtenkörper aus Aluminiumprofil. Oberfläche silber, weiß, graphit, kupfer, champagner oder schwarz lackiert. Weitere Oberflächenoptionen siehe Lightnet-Surface-Collection oder RAL nach Wahl. Microprismenoptik mit optimierter Blendungsbegrenzung speziell für Office-Anwendungen. Satinierter Opaldiffusor für Allgemeinbeleuchtung mit max. Transmissionsgrad und homogener Lichtpunktauflösung. Konverter in Leuchtgehäuse integriert, wahlweise einfach schaltbar oder stufenlos dimmbar (1-10V, DALI, Touch-Dim, Casambi). Farbtemperaturen 2200K, 2700K, 3000K, 3500K, 4000K oder 6500K. Binning initial \leq MacAdam 3. Farbwiedergabe CRI>80 oder CRI>90. Befestigungsset zur Montage inklusive. Farbliche Auswahl der indirekten Lichtaura in rot, grün, blau und magenta. Auf Anfrage: Integration von Notlichtkomponenten, Sensortechnologie.

EN Recessed mounted LED luminaire for frameless installation in plasterboard ceilings. Direct light distribution and indirect lighting corona. Luminaire body made of aluminum profile. Surface silver, white, graphite, copper, champagne or black coated. Further surface options see Lightnet-Surface-Collection or RAL of your choice. Microprismatic screen with optimized glare reduction especially for workplaces. Satin opal diffuser for general lighting with maximum transmittance and homogeneous lighting. Driver integrated into luminaire housing, optionally switchable or dimmable (1-10V, DALI, Touch-Dim, Casambi). Colour temperatures 2200K, 2700K, 3000K, 3500K, 4000K or 6500K. Binning initial \leq MacAdam 3. Colour rendering CRI>80 or CRI>90. Mounting brackets included. Colour selection for the indirect light aura: red, green, blue and magenta. On request: Integration of emergency lighting components, sensor technology.

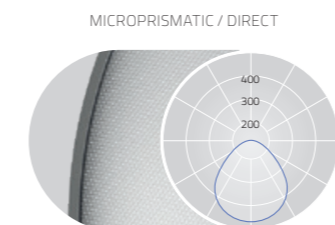
FR Luminaire LED en saillie pour murs et plafonds. Éclairage direct avec colerette de lumière indirecte ou uniquement éclairage direct. 6 diamètres différents de 300mm à 1200mm. Surface laquée blanc, argent, graphite, noir, champagne ou cuivre. Autres options de finition voir Lightnet-Surface-Collection ou RAL au choix. Diffuseur microprismatique optimisé pour un éblouissement limité et adapté aux bureaux. Diffuseur opale satiné pour un éclairage général et une transmission maximale et homogène. Driver intégré dans le luminaire, au choix ON/OFF ou graduable (1-10V, DALI, Touch-Dim, Casambi). Température de couleur 2200K, 2700K, 3000K, 3500K, 4000K ou 6500K. Binning initial \leq MacAdam 3. Rendu de couleur CRI>80 ou CRI>90. Sur demande: Intégration de composants d'éclairage de secours ou de capteurs.



PRODUCT-CODE: **B N1 O B E - 8 30 M - D300 - R**

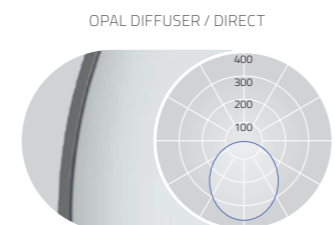
PRODUCT FAMILY	- B Basic
TYPE	- N1 Direct with Indirect Corona
OPTICAL SYSTEM	- A Microprismatic, O Opal
SURFACE FINISH	- W Snow White, V Ivory White, S Radiant Silver, U Urban Graphite, B Jet Black, H Champagne Silver, K Satin Copper*
CONTROL GEAR	- E On/Off, L DALI, D 1-10V, H Touch-Dim, C Casambi
COLOUR REND.	- 8 CRI>80, 9 CRI>90, F Full Spectrum
COLOUR TEMP.	- 22 2200K, 27 2700K, 30 3000K, 35 3500K, 40 4000K, 65 6500K
POWER	- E Low Power, M Medium Power
SIZE	- Luminaire Diameter in mm: D300, D400, D500, D600
AURA COLOUR	- R Red, G Green, B Blue, M Magenta, W White
ON REQUEST	- Emergency Module

* Housing for frameless installation is always white.



UGRs19 for Low Power (X=4H, Y=8H, S=0.25H)
DIRECT: 100%

D mm	Lumen/Watt Low Power	Lumen/Watt Medium Power
300	980lm/12W	1920lm/21W
400	1930lm/19W	3970lm/40W
500	2750lm/26W	5380lm/50W
600	4650lm/52W	8190lm/87W



DIRECT: 100%

D mm	Lumen/Watt Low Power	Lumen/Watt Medium Power
300	1000lm/12W	1960lm/21W
400	1970lm/19W	4060lm/40W
500	2810lm/26W	5540lm/50W
600	4820lm/52W	8540lm/87W

Lumen Values: Luminaire luminous flux at 4000K/CRI>80. Other configurations on request.



SNOW WHITE RADIANT SILVER URBAN GRAPHITE JET BLACK CHAMPAGNE SILVER SATIN COPPER