

Basic Déco L3 | Recessed Frame



DE LED-Einbauleuchte für gesägte Deckenöffnungen. Rein direktstrahlend. Leuchtenkörper aus Aluminium. 5 verschiedene Durchmesser von 330 bis 990mm. Außenrahmen und dekorativer Reflektoring in unterschiedlichen Lackierungen und Kombinationen erhältlich, z.B. weiß, silber, graphit, schwarz, gold oder kupferfarben. Zu Oberflächenoptionen- und Kombinationen siehe Lightnet-Surface-Collection. Rückversetzte Microprismenoptik mit optimierter Blendungsbegrenzung speziell für Office-Anwendungen. Satinierter Opaldiffusor für Allgemeinbeleuchtung mit max. Transmissionsgrad und homogener Lichtpunktauflösung. Konverter in Leuchtengehäuse integriert, wahlweise einfach schaltbar oder stufenlos dimmbar (DALI, Touch-Dim, Casambi). Farbtemperatur 2200K, 2700K, 3000K, 3500K, 4000K, 6500K oder Tunable White (2700-6500K). Binning initial \leq MacAdam 3. Farbwiedergabe CRI $>$ 80, CRI $>$ 90 oder Full Spectrum. Befestigungsset zur Montage inklusive. Auf Anfrage: Integration von Notlichtkomponenten.

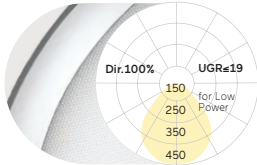
EN Recessed mounted LED luminaire for ceilings with cut-out openings. Direct only light distribution. Luminaire body made of aluminium. 5 different diameters from 330 to 990mm. Outer frame and decorative reflector ring available in various finishes and combinations, e.g. white, silver, graphite, black, gold or copper coated. For surface options and combinations check Lightnet Surface Collection. Recessed microprismatic screen with optimized glare reduction especially for workplaces. Satin opal diffuser for general lighting with maximum transmittance and homogeneous lighting. Driver integrated into luminaire housing, optionally switchable or dimmable (DALI, Touch-Dim, Casambi). Colour temperature 2200K, 2700K, 3000K, 3500K, 4000K, 6500K or Tunable White (2700-6500K). Binning \leq MacAdam 3. Colour rendering CRI $>$ 80, CRI $>$ 90 or Full Spectrum. Mounting brackets for assembly included. On request: Integration of emergency lighting components.

B L3 A W E-8 30 M- D330- G

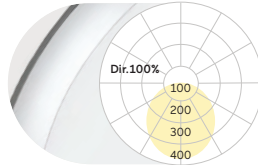
Product Family	B: Basic
Type	L3: Direct Only
Optical System	A: Microprismatic [D330-D680], O: Opal Diffuser
Surface Finish	W: Snow White, V: Ivory White, S: Radiant Silver, U: Urban Graphite, B: Jet Black, H: Anodic Champagne, K: Satin Copper
Control Gear	E: On/Off, L: DALI, H: Touch-Dim, C: Casambi, 6: DALI DT6 for TW, 8: DALI DT8 for TW
Colour Rendering	8: CRI>80, 9: CRI>90, F: Full Spectrum [except 2200K]
Colour Temperature	22: 2200K, 27: 2700K, 30: 3000K, 35: 3500K, 40: 4000K, 65: 6500K, TW: Tunable White 2700-6500K [D430-D990]
Power	E: Low Power, M: Medium Power
Size	Luminaire Diameter in mm: D330, D430, D530, D680, D990
Reflector	W: Snow White, V: Ivory White, S: Radiant Silver, U: Urban Graphite, B: Jet Black, H: Anodic Champagne, K: Satin Copper, G: Satin Gold
On Request	Radar Sensor, Emergency Module



Microprismatic | Direct

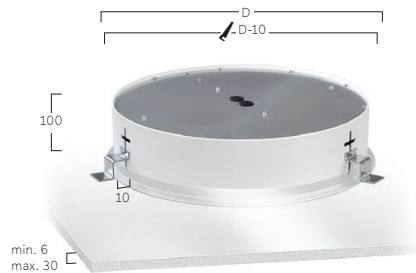


Opal Diffuser | Direct



D mm	Lumen/Watt		D mm	Lumen/Watt	
	Low Power	Medium Power		Low Power	Medium Power
330	880lm/8W	1730lm/14W	330	910lm/8W	1780lm/14W
430	1740lm/13W	3580lm/29W	430	1790lm/13W	3690lm/29W
530	2480lm/18W	4860lm/35W	530	2550lm/18W	5010lm/35W
680	3860lm/28W	7250lm/52W	680	3980lm/28W	7470lm/52W
			990	7000lm/59W	11830lm/106W

Lumen Values: Luminaire luminous flux at 4000K/CRI>80. Other configurations on request.



W Snow White
W Snow White



W Snow White
S Radiant Silver



W Snow White
U Urban Graphite



W Snow White
B Jet Black



W Snow White
H Anodic Champagne



W Snow White
K Satin Copper