

Midpoint C6 | 3-Phase Track



DE LED-Strahler für 3-Phasen-Stromschienen. 350° drehbar und 90° schwenkbar. Konverter im Strahlerkopf integriert, einfach schaltbar. Gehäuse aus Aluminium in weiß, silber, schwarz oder champagnerfarben lackiert. Weitere Oberflächenoptionen siehe Lightnet Surface Collection oder RAL nach Wahl. LED-Engine wahlweise XICATO ARTIST für höchste Lichtqualität mit bester Farbwiedergabe (CRI>97) und 5 Jahre Garantie für Farbkonstanz (MacAdam_{≤3}) oder ECO für höchste Energieeffizienz bei optimalem Preis-Leistungsverhältnis und CRI>90. Farbtemperatur 2700K, 3000K oder 4000K. Austauschbarer Linsen-Reflektor mit sphärischer Facettenoptik. Ausstrahlwinkel: 10° (Spot), 20° (Medium), 35° (Flood) oder 50° (Wide Flood). Standardmäßig klare Abdeckung. Reflektoring in verschiedenen Farbausführungen erhältlich. Stromschienenadapter wahlweise EUTRAC oder GLOBAL. Optional zusätzliche Filter oder Wabenraster.

EN LED spotlight for 3-phase tracks. 350° rotation and 90° tilt. Driver integrated into spotlight head, switchable. Housing made of white, silver, black or champagne coated aluminum. For further colour finishes please see the Lightnet-Surface-Collection or select your RAL of choice. LED Engine with XICATO ARTIST for highest light quality and colour rendering (CRI>97), including 5-year warranty for colour consistency (MacAdams 3) or ECO for highest energy efficiency with optimal price-performance ratio and CRI>90. Colour temperature 2700K, 3000K or 4000K. Replaceable lens reflector optic with spherical faceted optic. Beam angle: 10° (Spot), 20° (Medium), 35° (Flood) or 50° (Wide Flood). Standard clear cover. Reflector ring available in different colours. Track adapter options, EUTRAC or GLOBAL. Optional additional filters or honeycomb louvre.

PC6 BSE-927FM-BKG

Product Family	P: Midpoint
Type	C6: For 3-Phase Tracks [Tube Length 155mm]
Beam Angle	A: Spot 10°, B: Medium 20°, C: Flood 35°, D: Wide Flood 50°
Surface Finish	W: Snow White, V: Ivory White, S: Radiant Silver, B: Jet Black, H: Anodic Champagne
Control Gear	E: On/Off
Colour Rendering	9: CRI>90
Colour Temperature	27: 2700K, 30: 3000K, 40: 4000K
Led-Engine	F: Eco [Ra> 90], A: Artist [Ra> 97, Xicato]
Power	E: Low Power M: Medium Power
Optic Ring	W: Snow White, V: Ivory White, S: Radiant Silver, B: Jet Black, H: Anodic Champagne, G: Satin Gold, K: Satin Copper
Cover	K: Clear Cover [Standard], P: Prismatic Lens, H: Honeycomb Louvre
Adaptor	G: Global Adaptor, E: Eutrac Adaptor
On Request	Optic Removal Tool for clear cover



Spot 10° Led Engine Eco, Medium Power

Mounting Height	Illuminance [Lux] center/side	Beam Diameter
1 m	25250/12700	0.24 m
2 m	6312/3175	0.48 m
3 m	2806/1411	0.72 m
4 m	1578/794	0.95 m

LED Engine	2700K	3000K	4000K
Eco Low Power [19W]	1230 lm	1350 lm	1440 lm
Eco Medium Power [31W]	1660 lm	1860 lm	2020 lm
Artist Low Power [19W]	1040 lm	1090 lm	1190 lm
Artist Medium Power [31W]	1400 lm	1480 lm	1560 lm

Medium 20° Led Engine Eco, Medium Power

Mounting Height	Illuminance [Lux] center/side	Beam Diameter
1 m	17447/8455	0.32 m
2 m	4362/2114	0.64 m
3 m	1939/939	0.96 m
4 m	1090/528	1.30 m

LED Engine	2700K	3000K	4000K
Eco Low Power [19W]	1580 lm	1740 lm	1850 lm
Eco Medium Power [31W]	2360 lm	2640 lm	2870 lm
Artist Low Power [19W]	1330 lm	1390 lm	1510 lm
Artist Medium Power [31W]	1980 lm	2110 lm	2220 lm

Flood 35° Led Engine Eco, Medium Power

Mounting Height	Illuminance [Lux] center/side	Beam Diameter
1 m	6251/2731	0.63 m
2 m	1563/683	1.30 m
3 m	695/303	1.90 m
4 m	391/171	2.50 m

LED Engine	2700K	3000K	4000K
Eco Low Power [19W]	1530 lm	1680 lm	1790 lm
Eco Medium Power [31W]	2280 lm	2550 lm	2780 lm
Artist Low Power [19W]	1290 lm	1350 lm	1470 lm
Artist Medium Power [31W]	1930 lm	2060 lm	2160 lm

Wide Flood 50° Led Engine Eco, Medium Power

Mounting Height	Illuminance [Lux] center/side	Beam Diameter
1 m	3550/1319	0.94 m
2 m	887/330	1.90 m
3 m	394/147	2.80 m
4 m	222/82	3.80 m

LED Engine	2700K	3000K	4000K
Eco Low Power [19W]	1440 lm	1580 lm	1680 lm
Eco Medium Power [31W]	2230 lm	2490 lm	2710 lm
Artist Low Power [19W]	1250 lm	1310 lm	1430 lm
Artist Medium Power [31W]	1910 lm	2040 lm	2140 lm



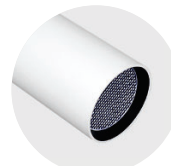
Optic Removal Tool for clear cover



Eutrac Adaptor



Global Adaptor



Honeycomb Louvre



Prismatic Lens



W Snow White
W Snow White



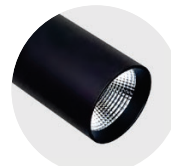
W Snow White
B Jet Black



W Snow White
G Satin Gold



S Radiant Silver
S Radiant Silver



B Jet Black
B Jet Black



B Jet Black
G Satin Gold